

*SELF-ADHESIVE MEMBRANE

COLPHENE 3000:

seal all horizontal terminations with sopramastic

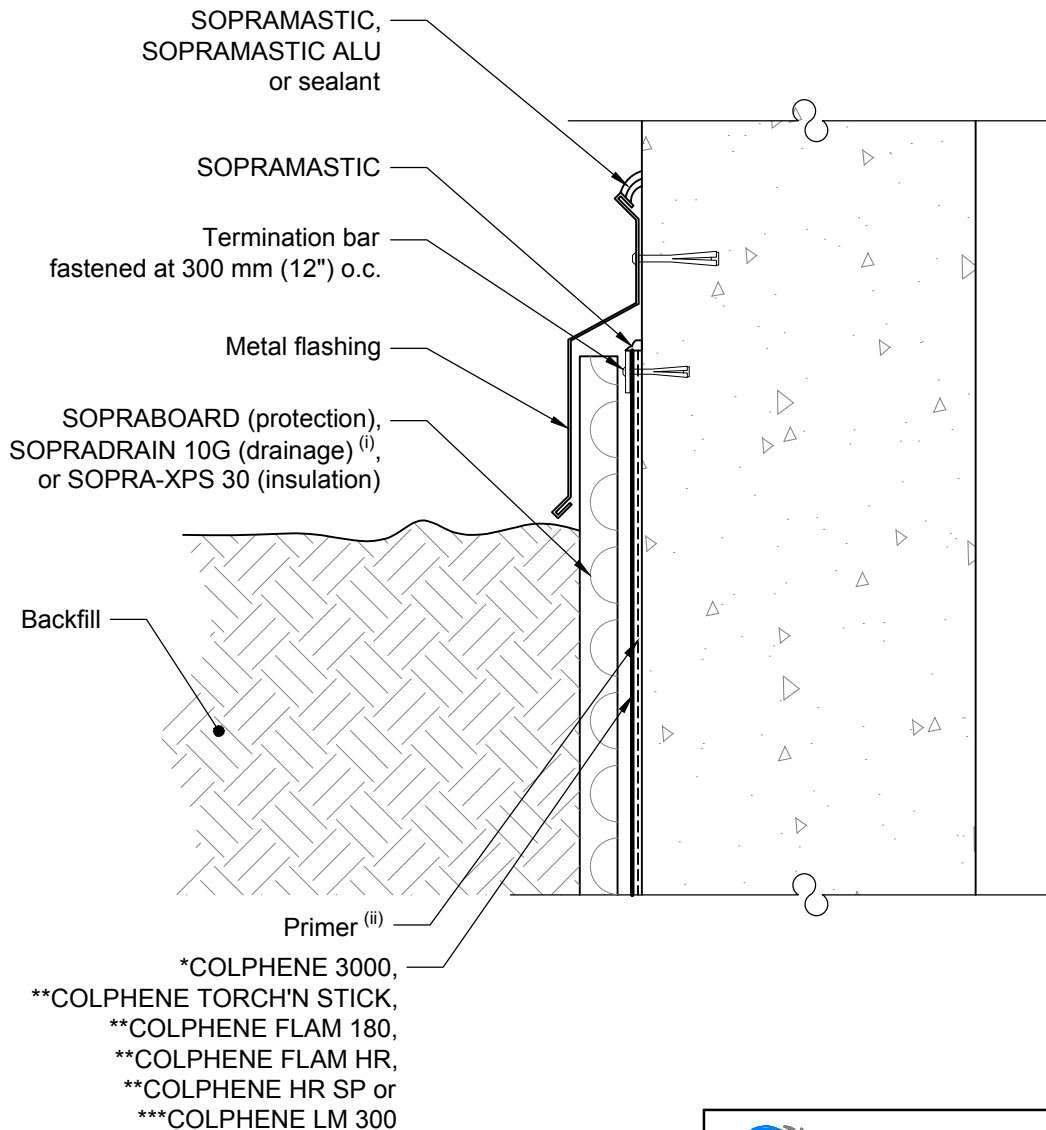
**THERMOFUSIBLE MEMBRANES

COLPHENE TORCH'N'STICK, COLPHENE FLAM 180,
COLPHENE FLAM HR AND COLPHENE HR SP:

seal all terminations (horizontal and vertical) with trowel
with a round end.

***LIQUID MEMBRANE

COLPHENE LM 300



COPYRIGHT 2017 SOPREMA



1688, J-B Michaud
Drummondville, QC J2C 8E9
WWW.SOPREMA.CA

TITLE: WATERPROOFING MEMBRANE
TERMINATION AT GRADE

PROJECT:	DRAWING NUMBER:
SCALE: N.T.S.	BGW10-2
DATE: OCTOBER 2017	

NOTES:

(i): Always install SOPRADRAIN filter fabric towards backfill.

(ii): Use SOPRASEAL STICK PRIMER with self-adhesive membrane and ELASTOCOL 500 with thermofusible membranes. No primer requested before the application of COLPHENE LM 300 membrane.